

EAST 1/4 Cor. Sec. 22 T 18N R 68W

RECORDED  
LARAMIE COUNTY  
CHEYENNE, WY.

CERTIFIED LAND CORNER RECORDATION

'89 OCT 5 PM 3 00

DESCRIPTION OF CORNER EVIDENCE FOUND, AND ORIGINAL RECORD (IF known)

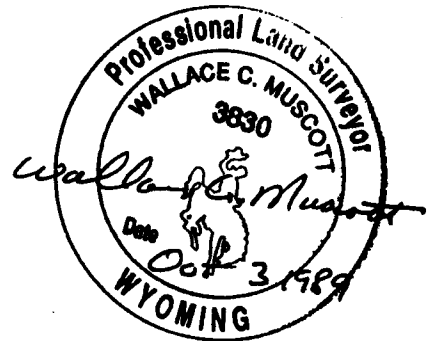
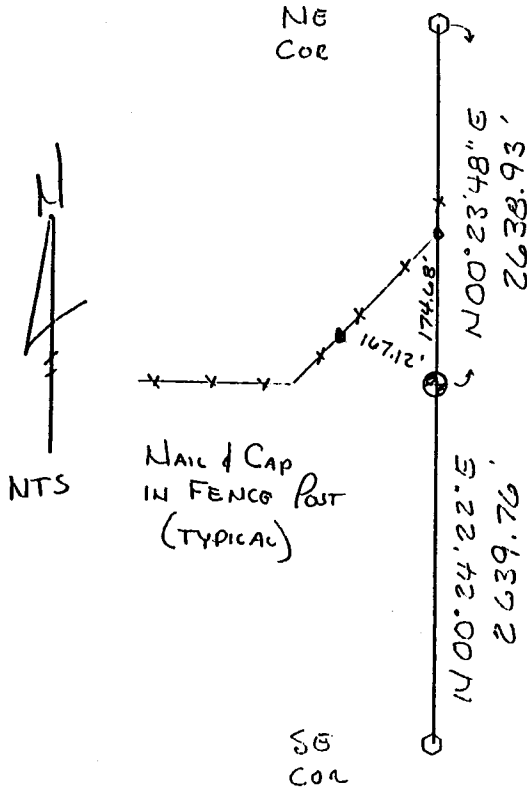
THIS IS AN UPDATE TO THE CORNER RECORDATION I PREVIOUSLY FILED ON THIS CORNER. (FOUND 1/2" REBAR ALONG SIDE THE ORIGINAL STONE)

DESCRIPTION OF MONUMENT AND ACCESSORIES ESTABLISHED TO PERPETUATE THE ORIGINAL LOCATION OF THIS CORNER:

I REPLACED THE 1/2" REBAR WITH A 30" X 5/8" REBAR WITH A CORPS OF ENGINEERS BRASS CAP, SET FLUSH, PLACED THE ORIGINAL STONE ALONG SIDE AND RAISE A MOUND OF STONE. I USED THE TIES I HAD PREVIOUSLY SET.

MAY 16 1989

SKETCH, WITH COURSE AND DISTANCE TO ADJACENT CORNER IF DETERMINED IN THIS SURVEY. (May Sketch or Paste Reproduction on Reverse Side.)



I, Wallace C. Muscott certify that I have carefully performed or reviewed the work done on the diagrammed corner as reported on this recordation form and approve the same.

Wallace C. Muscott  
Signature of Surveyor

3830  
Registration No.

STATE OF WYOMING,  
Office of Clerk and Recorder,  
County of \_\_\_\_\_

This "corner record" was filed for record on the \_\_\_\_\_ day of \_\_\_\_\_, 19\_\_\_\_, was noted on the cross-index plat and is assigned page No. \_\_\_\_\_, in book No. \_\_\_\_\_.

County Official			
Cross Index No. <u>P-17</u>	T. <u>18N</u>	R. <u>68W</u>	Mer. <u>64</u>
_____	T. _____	R. _____	Mer. _____
_____	T. _____	R. _____	Mer. _____
_____	T. _____	R. _____	Mer. _____
_____	T. _____	R. _____	Mer. _____
_____	T. _____	R. _____	Mer. _____
_____	T. _____	R. _____	Mer. _____